

This report provides environmental and socioeconomic information for user-defined areas, and combines that data into environmental justice and supplemental indexes.

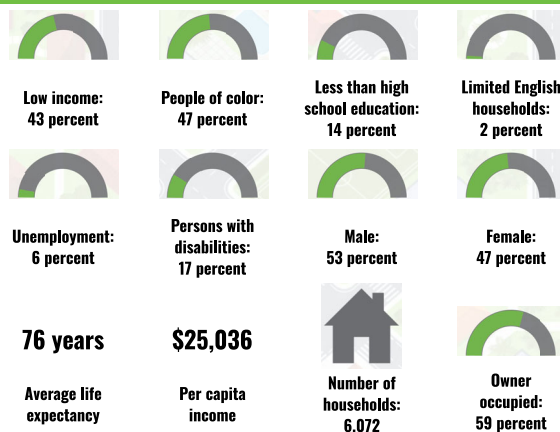
1 mile Ring Centered at 38.705669,-90.361122

Population: 14,556

Area in square miles: 3.14

Eri Community Maps Contributors, County of St. Charles, County of St. Louis, Missouri Dept. of Conservation, Missouri DNR, © OpenStreetMap, Microsoft, Eri, TomTom, Garmin, SafeGraph, GeoTechnologies, Inc. METI/MASA, USGS, EPA, NPS

COMMUNITY INFORMATION



The infographic displays eight donut charts arranged in two rows of four, each representing a different racial or ethnic group. The top row includes White (53%), Black (22%), American Indian (0%), and Asian (3%). The bottom row includes Hawaiian/Pacific Islander (0%), Other race (1%), Two or more races (7%), and Hispanic (14%). Each chart is a semi-circle with a blue segment indicating the percentage. The percentages are listed below each chart in bold black text.

Race/Ethnicity	Percentage
White	53%
Black	22%
American Indian	0%
Asian	3%
Hawaiian/Pacific Islander	0%
Other race	1%
Two or more races	7%
Hispanic	14%

	From Ages 1 to 4	8%
	From Ages 1 to 18	23%
	From Ages 18 and up	77%
	From Ages 65 and up	13%

<div><div></div></div>	Speak Spanish	15%
<div><div></div></div>	Speak Other Indo-European Languages	36%
<div><div></div></div>	Speak Asian-Pacific Island Languages	49%
<div><div></div></div>	Speak Other Languages	0%

LANGUAGE	PERCENT
English	82%
Spanish	10%
French, Haitian, or Cajun	2%
Russian, Polish, or Other Slavic	1%
Other Indo-European	1%
Vietnamese	1%
Tagalog (including Filipino)	1%
Total Non-English	18%

Notes: Numbers may not sum to totals due to rounding. Hispanic population can be of any race. Source: U.S. Census Bureau, American Community Survey (ACS) 2017-2021. Life expectancy data comes from the Centers for Disease Control.

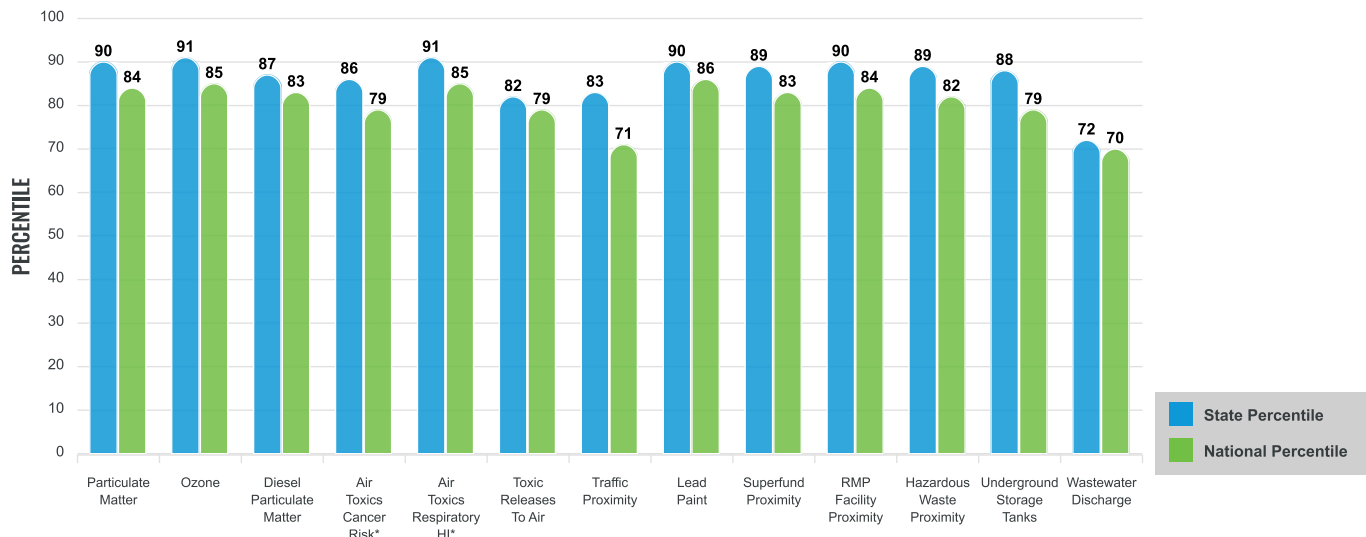
Environmental Justice & Supplemental Indexes

The environmental justice and supplemental indexes are a combination of environmental and socioeconomic information. There are thirteen EJ indexes and supplemental indexes in EJScreen reflecting the 13 environmental indicators. The indexes for a selected area are compared to those for all other locations in the state or nation. For more information and calculation details on the EJ and supplemental indexes, please visit the [EJScreen website](#).

EJ INDEXES

The EJ indexes help users screen for potential EJ concerns. To do this, the EJ index combines data on low income and people of color populations with a single environmental indicator.

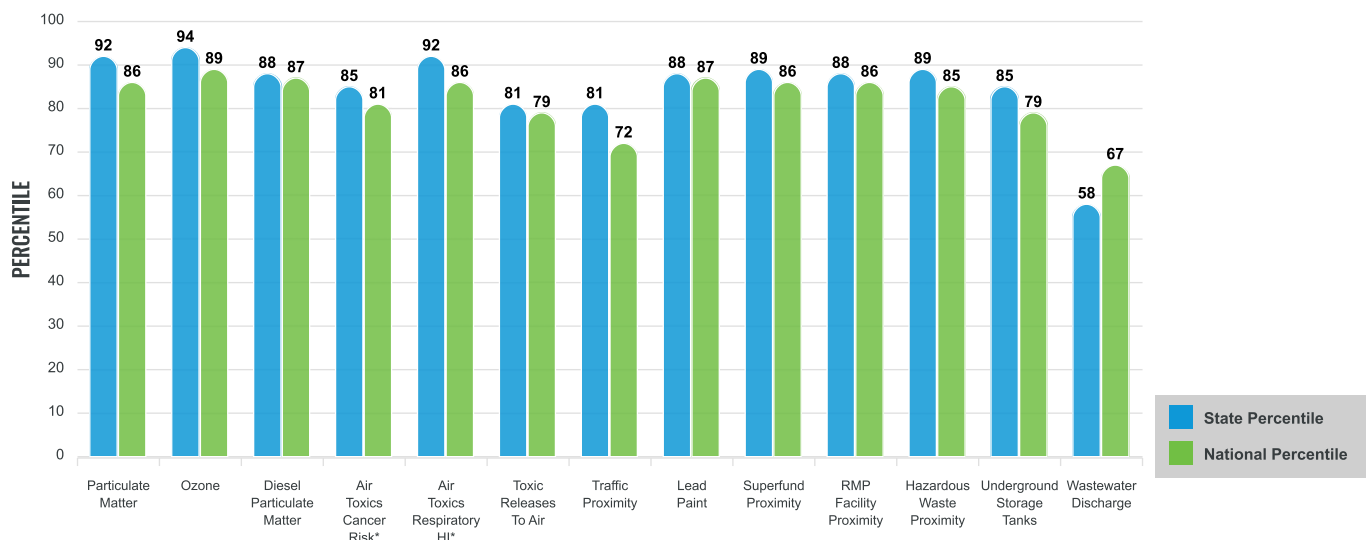
EJ INDEXES FOR THE SELECTED LOCATION



SUPPLEMENTAL INDEXES

The supplemental indexes offer a different perspective on community-level vulnerability. They combine data on percent low-income, percent linguistically isolated, percent less than high school education, percent unemployed, and low life expectancy with a single environmental indicator.

SUPPLEMENTAL INDEXES FOR THE SELECTED LOCATION



These percentiles provide perspective on how the selected block group or buffer area compares to the entire state or nation.

Report for 1 mile Ring Centered at 38.705669,-90.361122

EJScreen Environmental and Socioeconomic Indicators Data

SELECTED VARIABLES	VALUE	STATE AVERAGE	PERCENTILE IN STATE	USA AVERAGE	PERCENTILE IN USA
POLLUTION AND SOURCES					
Particulate Matter ($\mu\text{g}/\text{m}^3$)	9.51	8.05	94	8.08	84
Ozone (ppb)	67.7	59.9	94	61.6	88
Diesel Particulate Matter ($\mu\text{g}/\text{m}^3$)	0.444	0.268	80	0.261	87
Air Toxics Cancer Risk* (lifetime risk per million)	30	25	50	25	52
Air Toxics Respiratory HI*	0.4	0.31	76	0.31	70
Toxic Releases to Air	1,300	4,500	66	4,600	64
Traffic Proximity (daily traffic count/distance to road)	150	110	78	210	68
Lead Paint (% Pre-1960 Housing)	0.79	0.31	90	0.3	91
Superfund Proximity (site count/km distance)	0.17	0.097	86	0.13	82
RMP Facility Proximity (facility count/km distance)	1	0.45	87	0.43	88
Hazardous Waste Proximity (facility count/km distance)	3.7	1.3	89	1.9	84
Underground Storage Tanks (count/km ²)	5.2	2	88	3.9	78
Wastewater Discharge (toxicity-weighted concentration/m distance)	0.0058	0.49	54	22	63
SOCIOECONOMIC INDICATORS					
Demographic Index	45%	28%	84	35%	69
Supplemental Demographic Index	17%	14%	72	14%	70
People of Color	47%	23%	85	39%	64
Low Income	43%	33%	69	31%	72
Unemployment Rate	6%	5%	74	6%	66
Limited English Speaking Households	2%	1%	84	5%	62
Less Than High School Education	14%	10%	74	12%	69
Under Age 5	8%	6%	74	6%	76
Over Age 64	13%	18%	32	17%	37
Low Life Expectancy	22%	21%	62	20%	74

*Diesel particulate matter, air toxics cancer risk, and air toxics respiratory hazard index are from the EPA's Air Toxics Data Update, which is the Agency's ongoing, comprehensive evaluation of air toxics in the United States. This effort aims to prioritize air toxics, emission sources, and locations of interest for further study. It is important to remember that the air toxics data presented here provide broad estimates of health risks over geographic areas of the country, not definitive risks to specific individuals or locations. Cancer risks and hazard indices from the Air Toxics Data Update are reported to one significant figure and any additional significant figures here are due to rounding. More information on the Air Toxics Data Update can be found at: <https://www.epa.gov/haps/air-toxics-data-update>.

Sites reporting to EPA within defined area:

Superfund	0
Hazardous Waste, Treatment, Storage, and Disposal Facilities	0
Water Dischargers	5
Air Pollution	4
Brownfields	0
Toxic Release Inventory	0

Other community features within defined area:

Schools	6
Hospitals	0
Places of Worship	16

Other environmental data:

Air Non-attainment	Yes
Impaired Waters	No

Selected location contains American Indian Reservation Lands*	No
Selected location contains a "Justice40 (CEJST)" disadvantaged community	Yes
Selected location contains an EPA IRA disadvantaged community	Yes

Report for 1 mile Ring Centered at 38.705669,-90.361122

EJScreen Environmental and Socioeconomic Indicators Data

HEALTH INDICATORS					
INDICATOR	VALUE	STATE AVERAGE	STATE PERCENTILE	US AVERAGE	US PERCENTILE
Low Life Expectancy	22%	21%	62	20%	74
Heart Disease	6.6	6.9	42	6.1	62
Asthma	10.2	9.9	71	10	61
Cancer	6	6.6	31	6.1	45
Persons with Disabilities	15.8%	15.1%	58	13.4%	69

CLIMATE INDICATORS					
INDICATOR	VALUE	STATE AVERAGE	STATE PERCENTILE	US AVERAGE	US PERCENTILE
Flood Risk	6%	8%	47	12%	48
Wildfire Risk	0%	5%	0	14%	0

CRITICAL SERVICE GAPS					
INDICATOR	VALUE	STATE AVERAGE	STATE PERCENTILE	US AVERAGE	US PERCENTILE
Broadband Internet	14%	16%	52	14%	60
Lack of Health Insurance	15%	10%	79	9%	83
Housing Burden	Yes	N/A	N/A	N/A	N/A
Transportation Access	Yes	N/A	N/A	N/A	N/A
Food Desert	Yes	N/A	N/A	N/A	N/A

Footnotes

Report for 1 mile Ring Centered at 38.705669,-90.361122