



**UNITED STATES ENVIRONMENTAL PROTECTION AGENCY  
REGION 10**

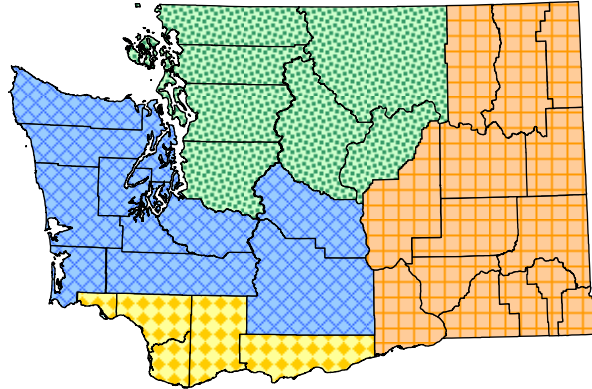
1200 Sixth Avenue, Suite 900  
Seattle, Washington 98101-3140

**Linda Storm (206) 553-6384**  
[Storm.Linda@epa.gov](mailto:Storm.Linda@epa.gov)

- **WA:** Clallum, Grays Harbor, Jefferson, Kitsap, Kittitas, Lewis, Mason, Pacific, Pierce, Thurston, and Yakima Counties

**Krista Rave-Perkins (206) 553-6686**  
[Rave-Perkins.Krista@epa.gov](mailto:Rave-Perkins.Krista@epa.gov)

- **WA:** Chelan, Douglas, Island, King, Okanogan, San Juan, Skagit, Snohomish, and Whatcom Counties



**John Olson (208) 378-5756**  
[Olson.John@epa.gov](mailto:Olson.John@epa.gov)

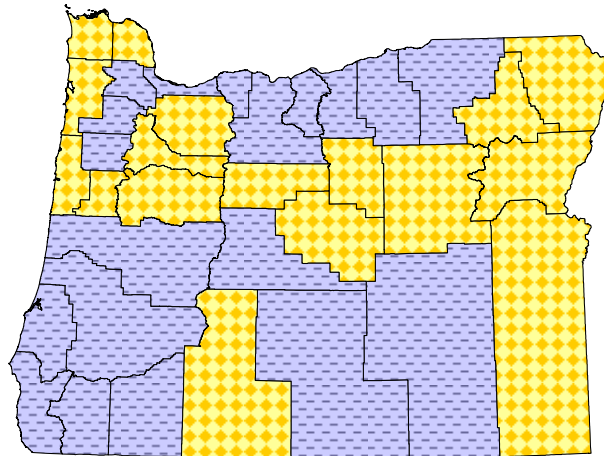
- **WA:** Adams, Asotin, Benton, Columbia, Ferry, Franklin, Garfield, Grant, Lincoln, Pend Oreille, Spokane, Stevens, Walla Walla, and Whitman Counties
- **ID:** Ada, Adams, Benewah, Boise, Bonner, Boundary, Clearwater, Elmore, Gem, Idaho, Kootenai, Latah, Lewis, Nez Perce, Owyhee, Payette, Shoshone, Valley, and Washington Counties

**Yvonne Vallette (503) 326-2716**  
[Vallette.Yvonne@epa.gov](mailto:Vallette.Yvonne@epa.gov)

- **WA:** Clark, Cowitz, Klickitat, Skamania, and Wahkiakum Counties
- **OR:** Baker, Benton, Clatsop, Columbia, Crook, Grant, Jefferson, Klamath, Lincoln, Linn, Malheur, Marion, Tillamook, Union, Wallowa, and Wheeler Counties

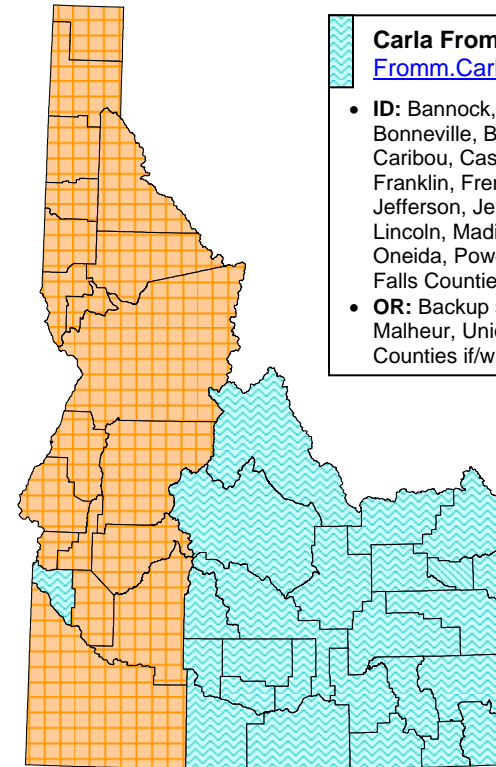
**Tracie Nadeau (503) 326-3685**  
[Nadeau.Tracie@epa.gov](mailto:Nadeau.Tracie@epa.gov)

- **OR:** Clackamas, Coos, Curry, Deschutes, Douglas, Gilliam, Harney, Hood, Jackson, Josephine, Lake, Lane, Morrow, Multnomah, Polk, Sherman, Umatilla, Wasco, Washington, and Yamhill Counties



**Carla Fromm (208) 378-5755**  
[Fromm.Carla@epa.gov](mailto:Fromm.Carla@epa.gov)

- **ID:** Bannock, Bear, Bingham, Blaine, Bonneville, Butte, Camas, Canyon, Caribou, Cassia, Clark, Custer, Franklin, Fremont, Gooding, Jefferson, Jerome, Lake, Lemhi, Lincoln, Madison, Minidoka, Oneida, Power, Teton, and Twin Falls Counties
- **OR:** Backup support for Baker, Malheur, Union, and Wallowa Counties if/when appropriate

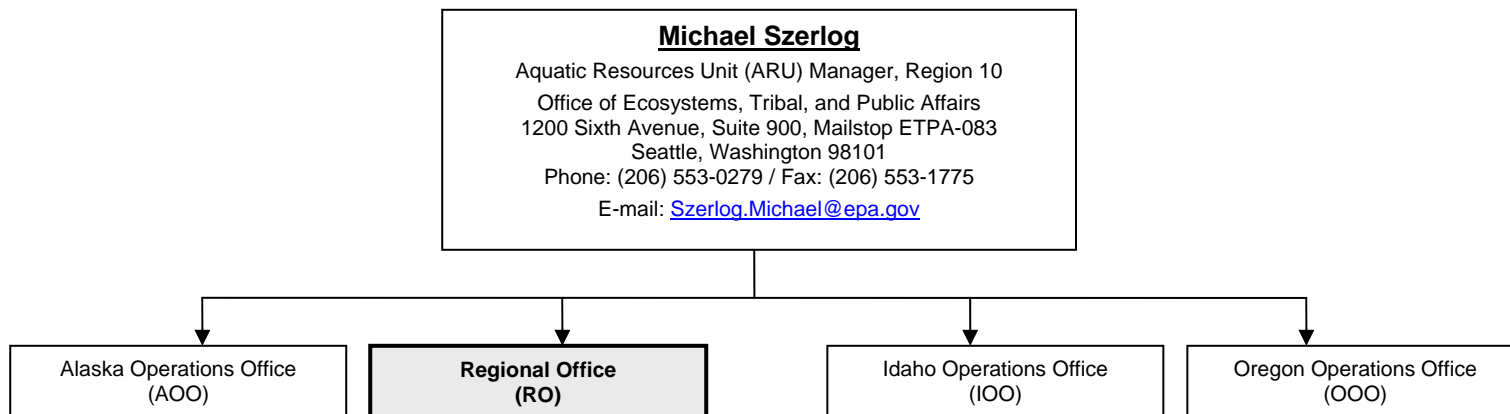


**AQUATIC RESOURCES UNIT, REGIONAL (WA), OREGON, AND IDAHO OPERATIONS OFFICES  
GEOGRAPHIC & PROGRAM RESPONSIBILITIES**

(UPDATED: 1/20/2009)



**UNITED STATES ENVIRONMENTAL PROTECTION AGENCY**  
**REGION 10**  
1200 Sixth Avenue, Suite 900  
Seattle, Washington 98101-3140



**Regional Office Staff**

**Rebecca Chu**  
Biologist  
(206) 553-1774  
[Chu.Rebecca@epa.gov](mailto:Chu.Rebecca@epa.gov)  
1200 Sixth Ave, ETPA-083  
Seattle, Washington 98101  
Fax: (206) 553-1775

- Clean Water Act Section 404 (Wetlands) Enforcement Coordination for Alaska, Idaho, Oregon, and Washington

**Amy Le'Feat**  
Office Manager  
(206) 553-1918  
[LeFeat.Amy@epa.gov](mailto:LeFeat.Amy@epa.gov)  
1200 Sixth Ave, ETPA-083  
Seattle, Washington 98101  
Fax: (206) 553-1775

- Administrative Support
- Records Management
- Enforcement Support

**Krista Rave-Perkins**  
Environmental Protection Specialist  
(206) 553-6686  
[Rave-Perkins.Krista@epa.gov](mailto:Rave-Perkins.Krista@epa.gov)  
1200 Sixth Ave, ETPA-083  
Seattle, Washington 98101  
Fax: (206) 553-1775

- Wetlands & watershed issues in Washington (policy, regulatory, mitigation and monitoring issues)
- Wetlands Enforcement
- 2009 Priority Watershed - Georgia Basin

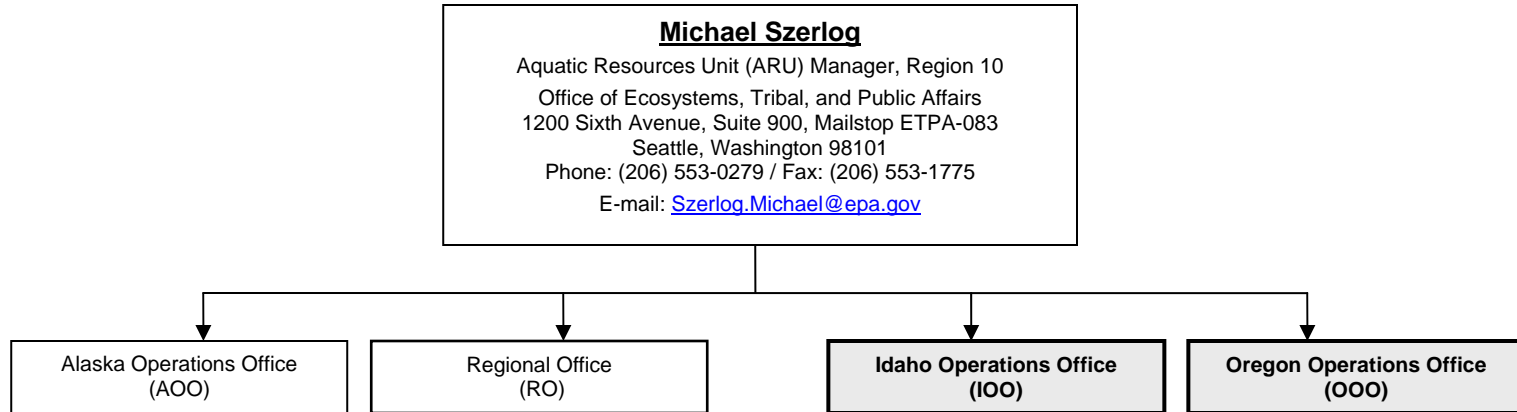
**Linda Storm**  
Ecologist  
(206) 553-6384  
[Storm.Linda@epa.gov](mailto:Storm.Linda@epa.gov)  
1200 Sixth Ave, ETPA-083  
Seattle, Washington 98101  
Fax: (206) 553-1775

- Wetlands & watershed issues in Washington (policy, regulatory, mitigation and monitoring issues)
- Wetlands Enforcement
- Regional Jurisdictional Lead for Washington State
- 2009 Priority Watershed – Lower Chehalis and Grays Harbor
- Wetland Delineation & Lead for National Wetland Plant Indicator Status Updates

**VACANT**  
Regional Wetland Ecologist  
(206) 553-####  
[Last.First@epa.gov](mailto>Last.First@epa.gov)  
1200 Sixth Ave, ETPA-083  
Seattle, Washington 98101  
Fax: (206) 553-1775



**UNITED STATES ENVIRONMENTAL PROTECTION AGENCY  
REGION 10**  
1200 Sixth Avenue, Suite 900  
Seattle, Washington 98101-3140



**Idaho Operations Office Staff**

**Carla Fromm**  
Biologist  
(208) 378-5755  
[Fromm.Carla@epa.gov](mailto:Fromm.Carla@epa.gov)  
1435 North Orchard  
Boise, ID 83706  
Fax: (208) 378-5744

- Wetlands & watershed issues in Idaho (policy, regulatory, mitigation and monitoring issues)
- Wetlands Enforcement
- NPDES for Aquaculture in Idaho
- 2009 Priority Watershed – Upper Salmon

**John Olson**  
Ecologist  
(208) 378-5756  
[Olson.John@epa.gov](mailto:Olson.John@epa.gov)  
1435 North Orchard  
Boise, ID 83706  
Fax: (208) 378-5744

- Wetlands & watershed issues in Idaho & Washington (policy, regulatory, mitigation and monitoring issues)
- Wetlands Enforcement
- Backup Regional Wetland Coordinator
- Regional Jurisdictional Lead for Idaho
- 2009 Priority Watershed – Pend Oreille Lake

**Oregon Operations Office Staff**

**Tracie Nadeau**  
Ecologist  
(503) 326-3685  
[Nadeau.Tracie@epa.gov](mailto:Nadeau.Tracie@epa.gov)  
805 SW Broadway, Suite 500  
Portland, OR 97205  
Fax: (503) 326-3399

- Wetlands & watershed issues in Oregon (policy, regulatory, mitigation and monitoring issues)
- Wetlands Enforcement
- Lead, Oregon Streamflow Duration Assessment Method
- 2009 Priority Watershed - Middle Columbia-Hood

**Yvonne Vallette**  
Biologist  
(503) 326-2716  
[Vallette.Yvonne@epa.gov](mailto:Vallette.Yvonne@epa.gov)  
805 SW Broadway, Suite 500  
Portland, OR 97205  
Fax: (503) 326-3399

- Wetlands & watershed issues in Oregon & Washington (policy, regulatory, mitigation and monitoring issues)
- Wetlands Enforcement
- Regional Jurisdictional Lead for Oregon
- NEPA lead for transportation, ports & energy projects in Oregon
- Program manager for Lower Columbia River National Estuary Program
- 2009 Priority Watershed – Tualatin Valley