

ENVIRONMENTAL Fact Sheet



Bunker Hill Superfund Site, Northern Idaho

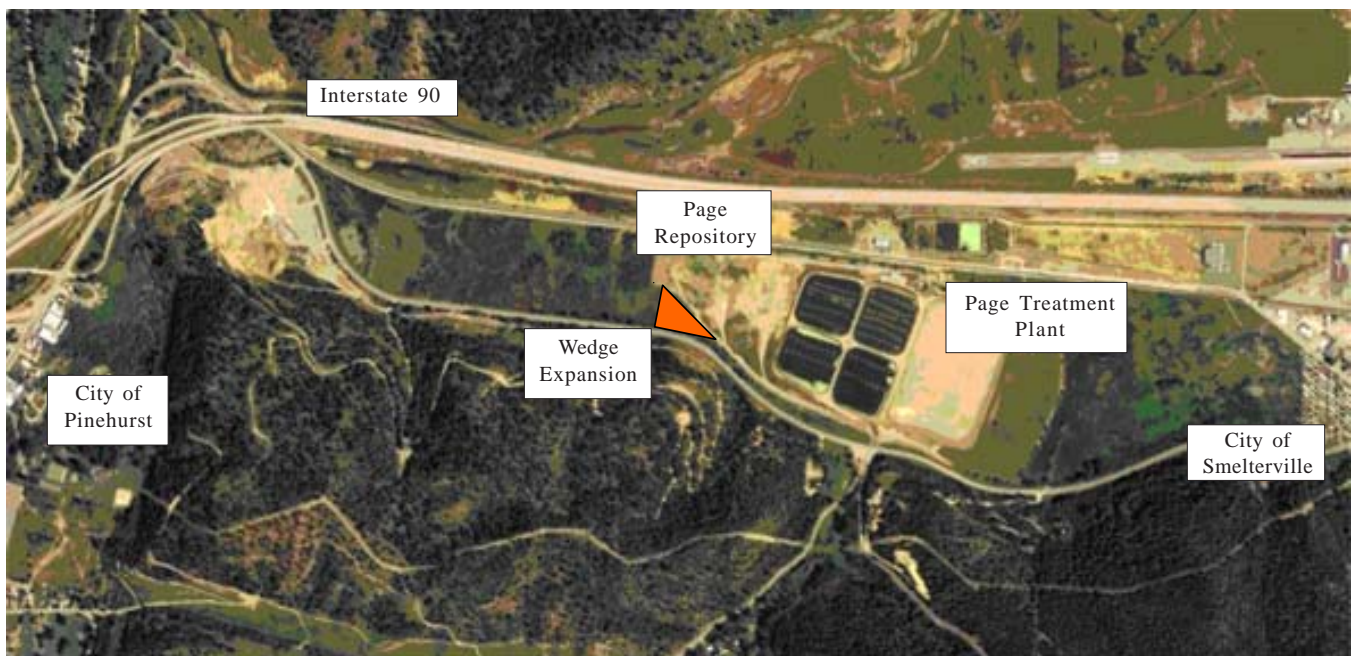
U.S. Environmental Protection Agency, Region 10 / Idaho Dept of Environmental Quality



Page Waste Repository: Disposal Site to Expand

April 2009

A limited expansion of the Page repository will start this summer. The repository, west of Smelterville, Idaho, has reached its capacity. The repository is a disposal site that takes in contaminated waste soils from the local community. The Upstream Mining Group (UMG) will do most of the field work. DEQ (Idaho Department of Environmental Quality) and EPA (U.S. Environmental Protection Agency) will do oversight.



A small, wedge-shaped expansion of the Page repository will begin this summer

The expansion will add about two acres to the site's footprint. Capacity will grow by about 75,000 cubic yards. Based on disposal rates over the past 10 years, DEQ predicts this small expansion will provide capacity for 3 to 7 more years.

Most of the existing repository will be closed after the expansion area is open. Part of it may be used to temporarily stockpile wastes. As always, the site will be open to accept permitted ICP (Institutional Control Program) waste during the project. About 12 acres of the existing repository will be seeded with native grasses to control dust and reduce the amount of water soaking into the wastes. Public access to the existing Page repository, which is owned by the South Fork Coeur d'Alene Sewer District, will be closed. Access to the new expansion area will be from the same road being used now.

The expansion will fill about two acres of contaminated wetlands and riparian area which developed on mine tailings. A Clean Water Act Section 404 analysis is needed. The agencies and UMG are considering locations to recreate the wetlands values that will be lost in the expansion. Although no formal public comment period is required, the public will have a chance to preview the analysis this summer.

Looking to the Future

DEQ and EPA are working with UMG on several items. UMG cleaned up tailings in the Page area as required by a 1994 legal agreement. DEQ and EPA are reviewing past work to make sure all required elements of the Page area cleanup have been done.



U. S. Environmental Protection Agency
1200 Sixth Avenue, Suite 900, ETPA-081
Seattle, Washington 98101-3140

Pre-Sorted Standard
Postage and Fees Paid
U.S. EPA
Permit No. G-35
Seattle, WA

Inside: Learn about an upcoming expansion of the Page waste repository.

DEQ, EPA, and UMG also are exploring possible locations for a long-term ICP repository in the “Box” area. This long-term ICP repository would take in mining-contaminated materials from both the populated and non-populated areas of the Box. Current efforts are focusing on determining the rate at which ICP material will likely be generated in future years throughout the Box. This rate will determine how big the long-term ICP repository would need to be. When the long-term ICP repository is to be created, the agencies will carry out a public involvement process.

Background

The Page waste repository serves only the “Box.” The Box is a 21-square-mile area along I-90, in the Silver Valley in northern Idaho. It includes the communities of Kellogg, Smelterville, Pinehurst, Wardner, Page, Elizabeth Park, Montgomery Gulch, and Ross Ranch. The Box is part of the Bunker Hill Superfund Site.

The Page repository takes in waste soils from development activity in the Box. It also takes in soils from the local Institutional Controls Program (ICP). The soils contain contaminants such as lead and arsenic. Those soils must be safely contained to protect public health and the environment.

Improvements in the management of the repository have recently been made. To keep non-ICP wastes (trash and yard wastes) out of the repository, access to Page is now more restricted. Access for disposal now requires an ICP access card. To get a disposal permit, call PHD at 208-783-0707. The repository will not accept household refuse, electronics, information technology wastes, household hazardous wastes, wood

waste, or construction waste that is not permitted by Panhandle Health District under the ICP.

Last year, erosion trouble spots at the repository were fixed. Side slopes were regraded and seeded. Also, features were installed to direct rainfall and snowmelt off the repository surface. Operations and maintenance plans are being finalized to make sure that the site is properly managed over the long term, to protect people and the environment.

Contacts For More Information

Bruce Schuld, DEQ Project Manager, Boise, ID
bruce.schuld@deq.idaho.gov or 208-373-0554

Anne McCauley, EPA Project Manager, Seattle, WA
mccauley.anne@epa.gov or 206-553-4689 or 800-424-4372

Documents

Select project documents can be viewed at:

Kellogg Public Library
16 West Market Avenue
Kellogg, ID 83827
208-786-7231

EPA Records Center
1200 Sixth Avenue
Seattle, WA 98101
206-553-4494

Websites

DEQ Cleanup Website:

http://www.deq.idaho.gov/waste/prog_issues/mining/cda_basin.cfm#bunker

EPA Cleanup Website:

<http://yosemite.epa.gov/r10/cleanup.nsf/sites/cda>