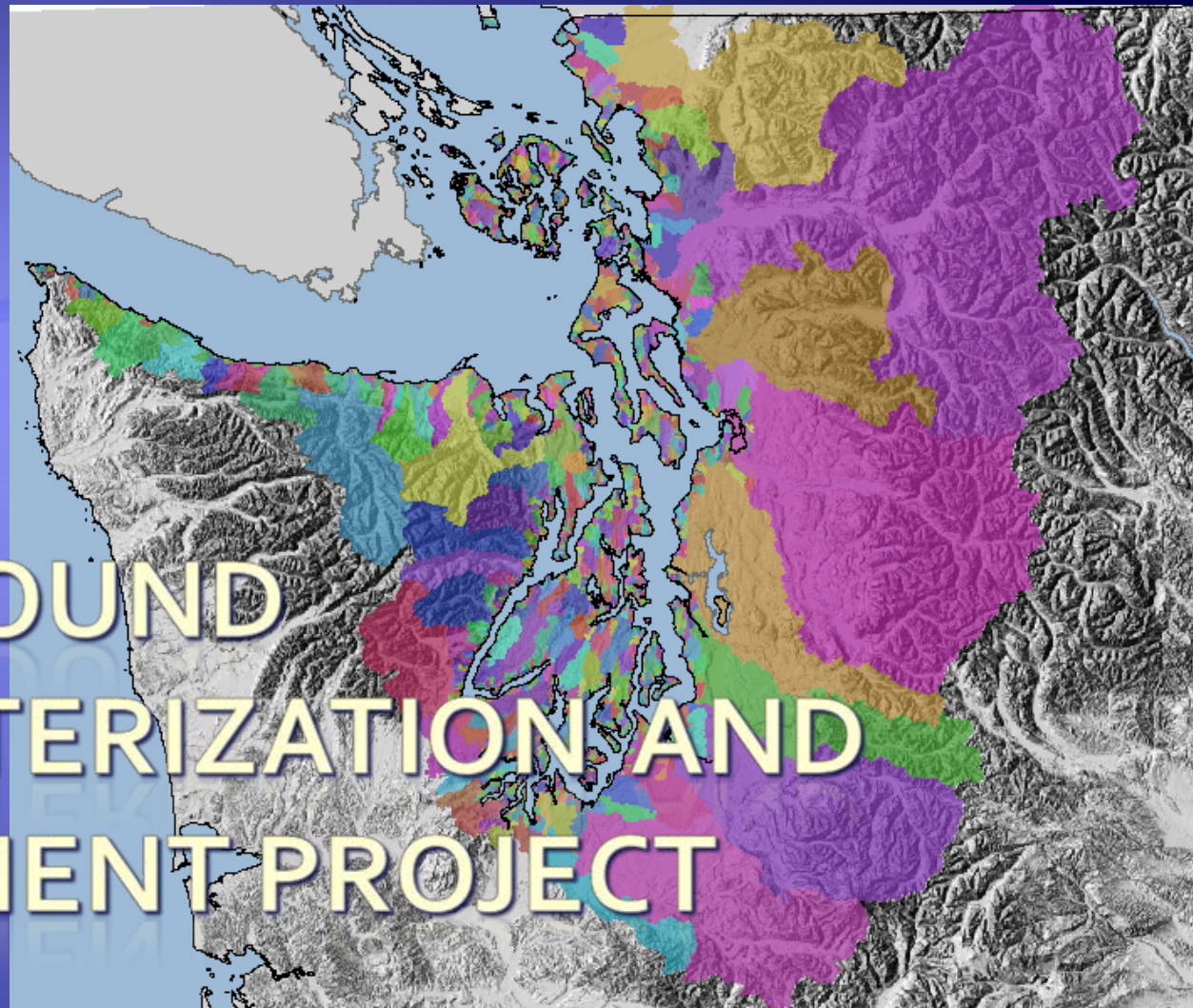


PUGET SOUND CHARACTERIZATION AND ASSESSMENT PROJECT

NOVEMBER 16, 2009

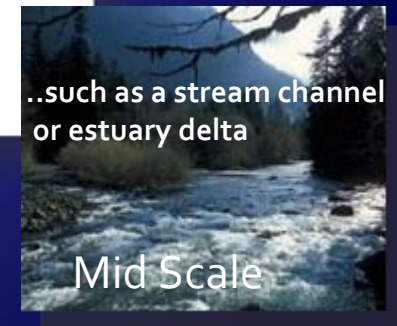
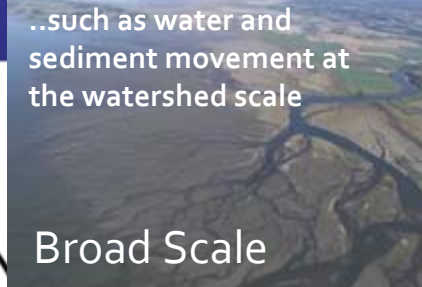
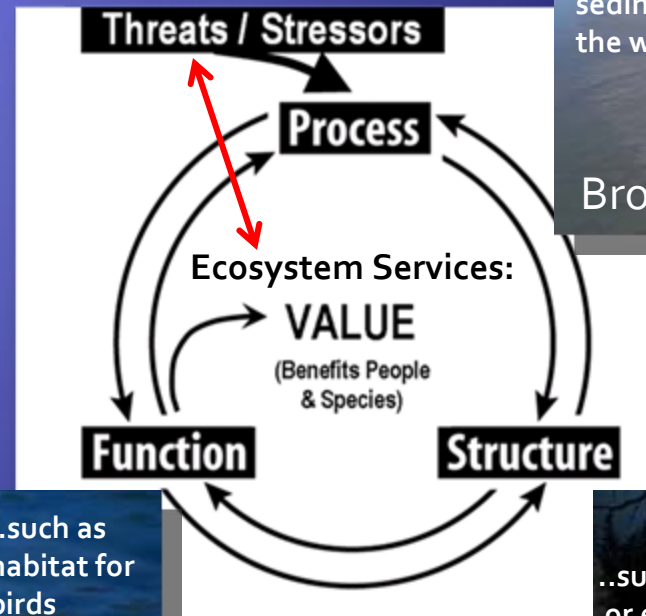


PUGET SOUND CHARACTERIZATION AND ASSESSMENT PROJECT

NOVEMBER 16, 2009

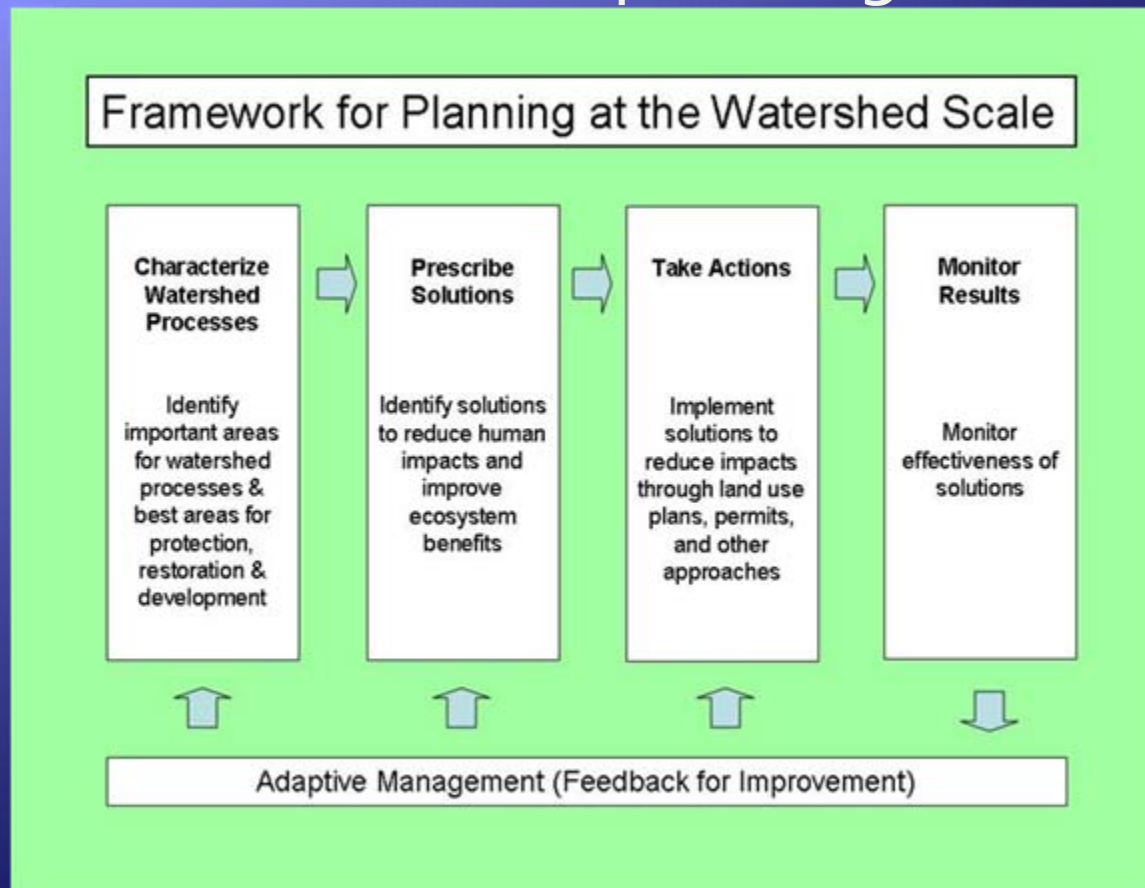
Intro to Project - Purpose

- ◆ Sound-wide assessment of:
 - ◆ Freshwater processes
 - ◆ Nearshore processes
 - ◆ Wildlife habitat



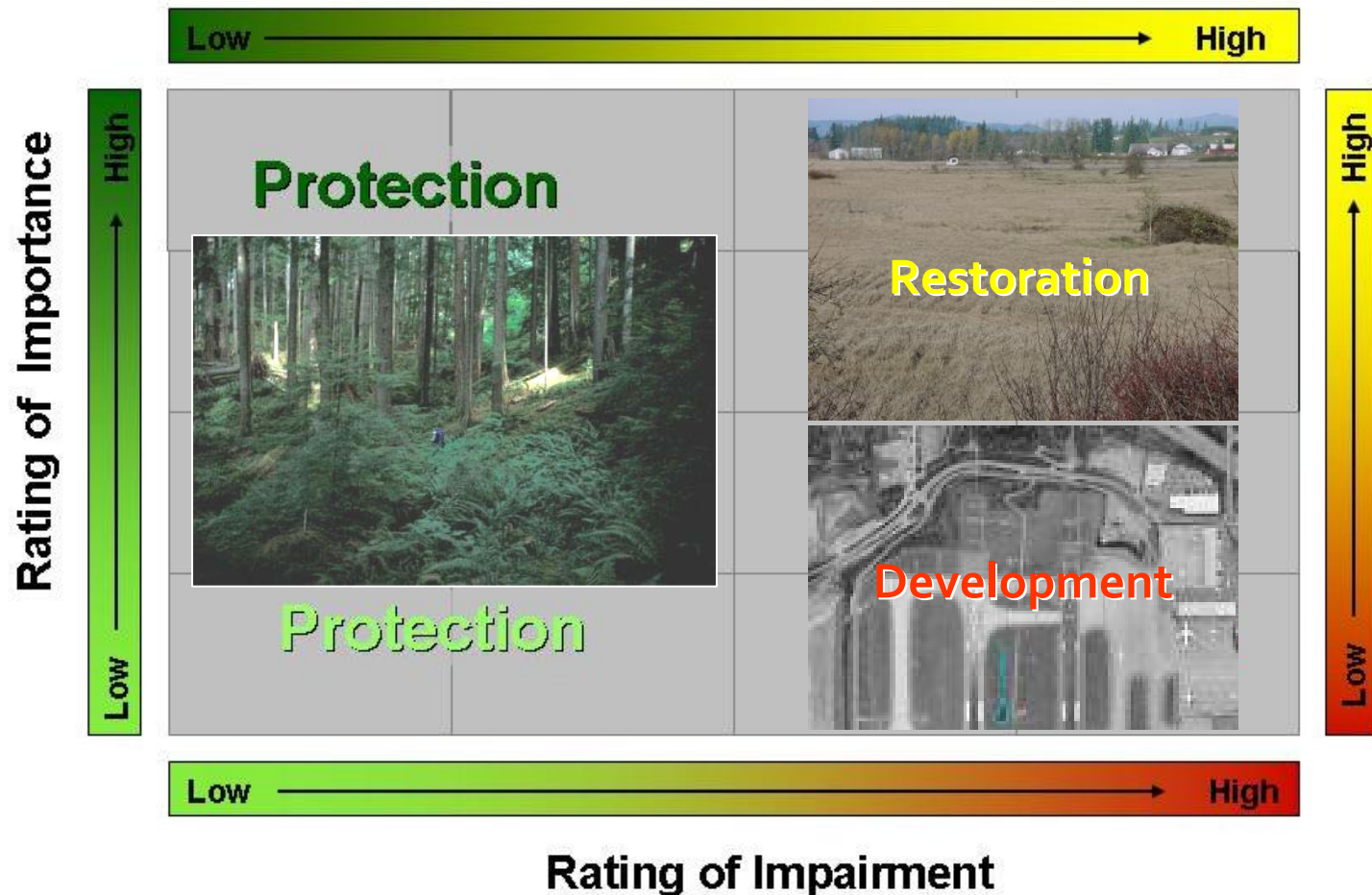
Objectives

- ◆ Help bridge “the gap” between science and its application
- ◆ Work within a watershed planning framework



Objectives

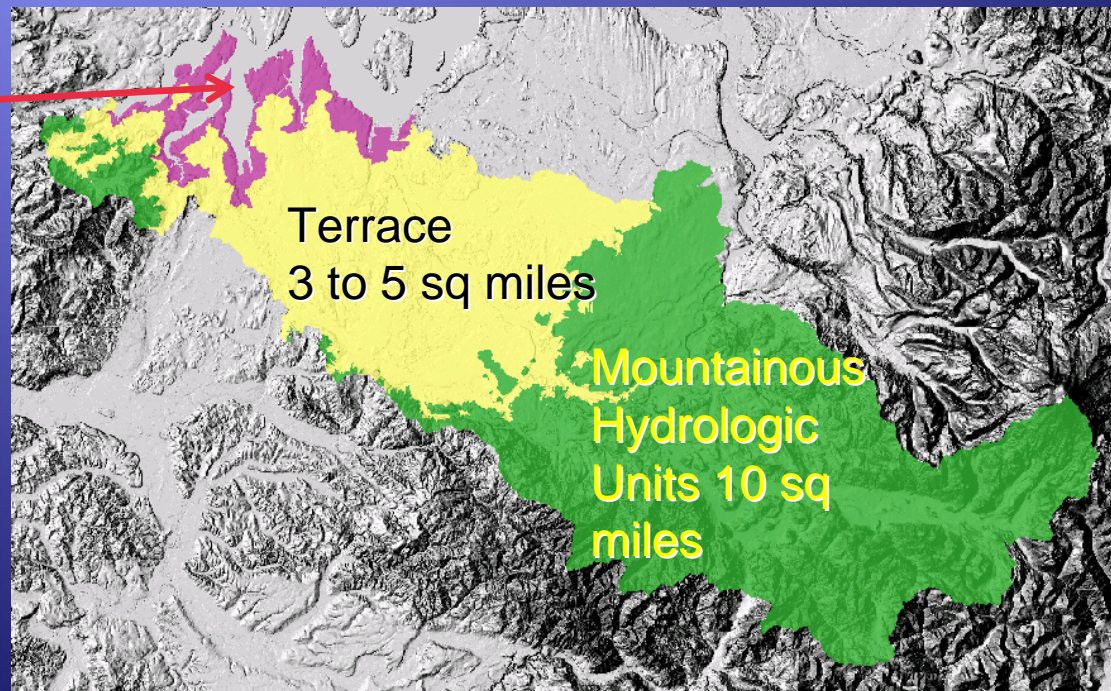
- ◆ Identify and prioritize areas for protection, restoration and development



Products

- ◆ Phase I – Watershed Condition Index for Water Flow Processes
- ◆ Due End of December 2009
- ◆ Provided for each WRIA for three Landscape Groups

Coastal
Hydrologic
Units 1 sq
mile





Index of Process Condition =

(Index of importance) – (Index of impairment)

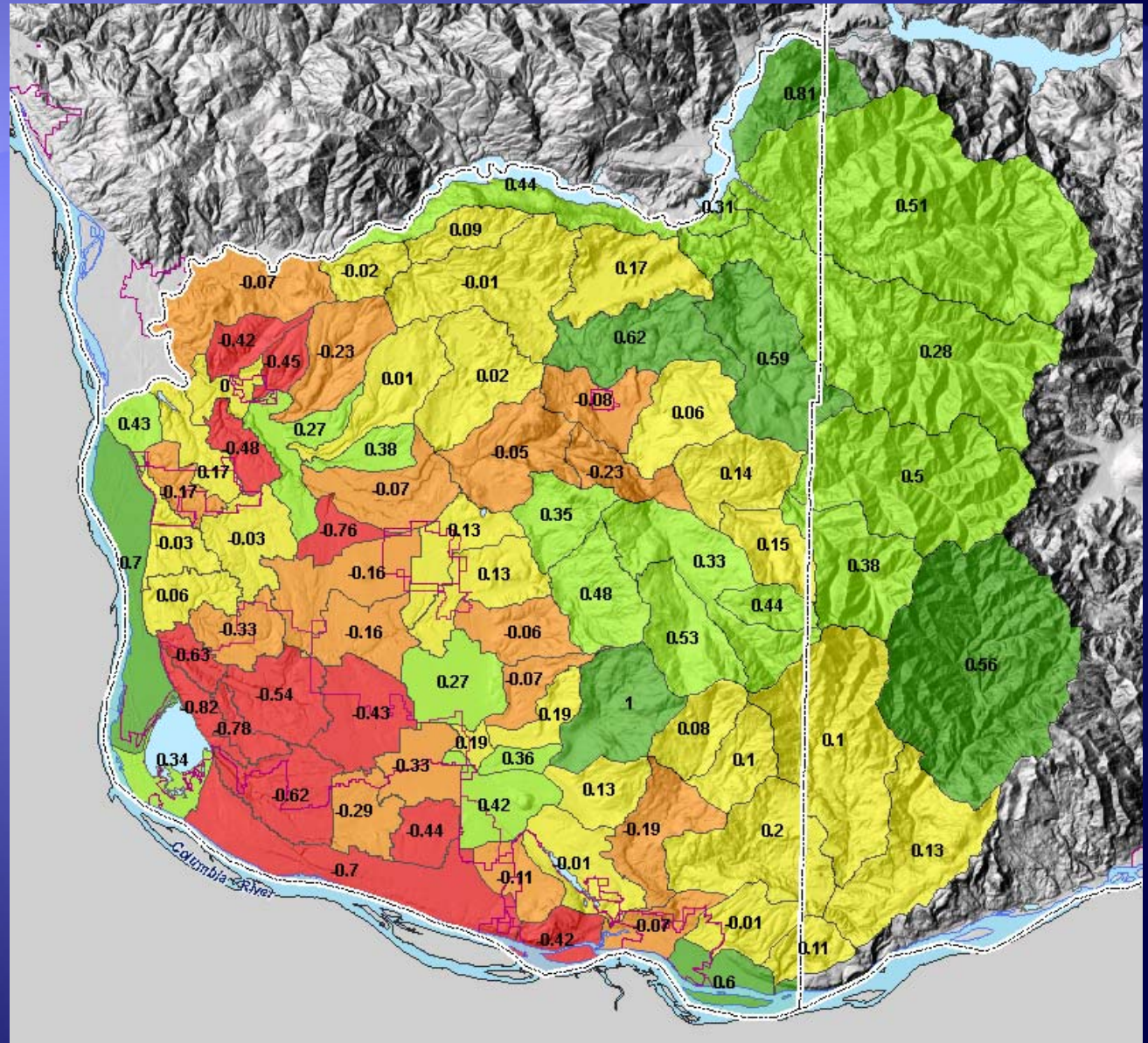
- ◆ Range of scores is from -1 to 1



- ◆ A score closer to "1" indicates an area more suitable for protection
- ◆ A score around "0" indicates an area more suitable for restoration or lower priority protection
- ◆ A score closer to "-1" is more suitable for development

Index of Condition for Water Flow Process

Importance score
Minus
Impairment score

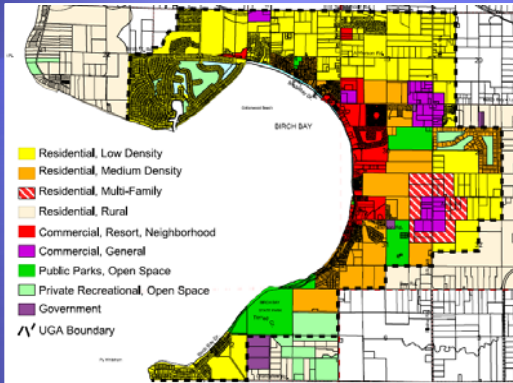




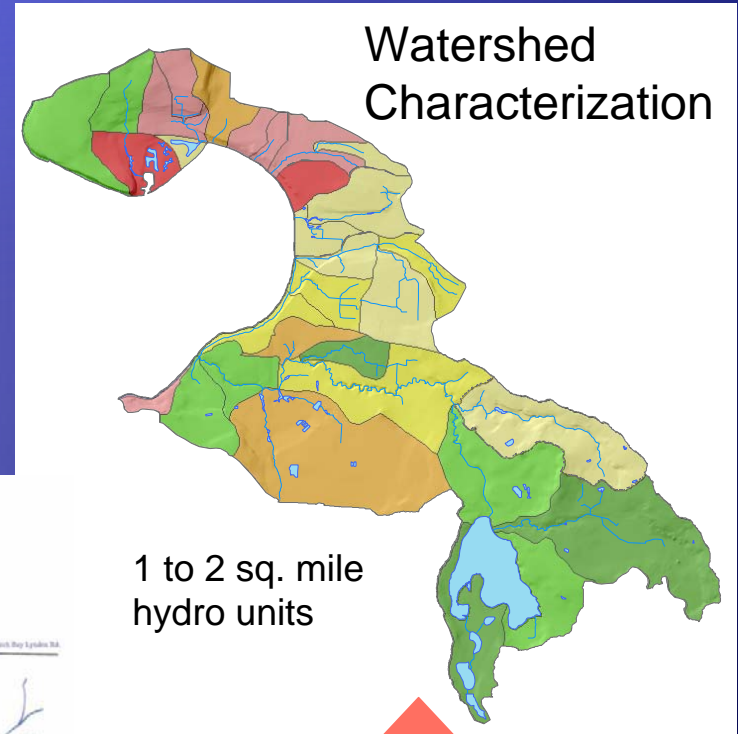
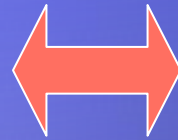
Products – Phase II, 2010

- ◆ Integrate other process models:
 - ◆ Wildlife Index
 - ◆ Water Quality Models (stormwater, nutrients)
 - ◆ PSNERP Change Analysis
- ◆ Conduct characterization at finer scale
 - ◆ (e.g. “specific plan” scale such as Birch Bay)

Birch Bay Sub Area Plan



Sub-Area Plan



1 to 2 sq. mile hydro units



Design Guidelines

